

# Ergebnisse der Hauptklausur Theoretische Grundlagen der Informatik Wintersemester 2016/2017

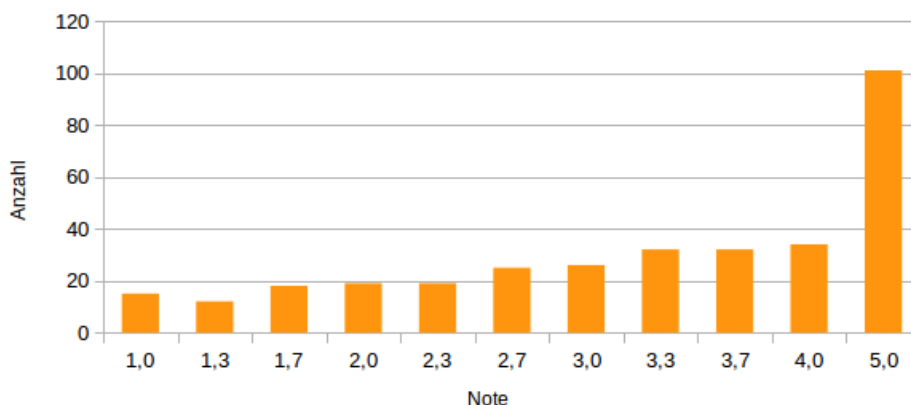
Die *erste Klausureinsicht* findet am Mittwoch den 26. April von 16:00 bis 19:00 Uhr in Raum 301 im Informatikgebäude 50.34 statt. Die *zweite Klausureinsicht* findet am Donnerstag den 27. April von 16:00 bis 19:00 Uhr in Raum 301 im Informatikgebäude 50.34 statt.

Um die Wartezeiten bei beiden Klausureinsichten möglichst kurz zu halten, bitten wir Sie, sich an die folgende zeitliche Einteilung nach Hörsälen zu halten:

16:00 - 17:00 Gerthsen & Daimler  
17:00 - 18:00 Audimax  
18:00 - 19:00 Tulla & Benz

Studenten mit einem "X" in der Spalte "Mündliche Prüfung" melden sich bitte im Sekretariat (Raum 321, Informatikgebäude 50.34), um einen Termin für die mündliche Nachprüfung zu vereinbaren.

**Notenverteilung mit Bonus  
Hauptklausur WS 16/17**



Durchfallquote: 30,33%  
Notendurchschnitt: 3,46  
nur bestandene: 2,79

Nötige Punkte	Note(ohne Bonus)
44	1,0
41	1,3
38	1,7
35	2,0
32	2,3
29	2,7
26	3,0
23	3,3
20	3,7
17	4,0
0	5,0

5.0 = nicht bestanden

Klausur-ID	Note ohne Bonus	Note mit Bonus	Mündliche Prüfung
ABJZTQ	2.0	1.7	
ABTOBO	2.7	2.3	
ACCEBY	4.0	4.0	
ACZDRX	3.0	2.7	
AFIETQ	5.0	5.0	
AHTXLM	5.0	5.0	
AIUXHX	3.0	3.0	
AJNHDQ	5.0	5.0	X
AKUFXR	1.3	1.0	
AKWPUC	2.0	1.7	
ALPNYC	3.7	3.3	
AMZDSJ	5.0	5.0	
AOBHJI	4.0	4.0	
AOXVUV	5.0	5.0	X
AVPMLD	5.0	5.0	
AYMKKE	3.7	3.7	
BBBYDI	2.0	1.7	
BBLTRM	3.0	2.7	
BDZQRD	5.0	5.0	X
BGUMYR	5.0	5.0	X
BJARPR	2.7	2.3	
BLLRMM	2.3	2.0	
BRYDQD	2.3	2.0	
BSEZHG	2.0	1.7	
BYWEQC	5.0	5.0	X
CAFNTP	5.0	5.0	
CAHXEN	1.3	1.3	
CBEXUJ	3.3	3.3	
CBORGZ	4.0	4.0	
CDSGSP	5.0	5.0	
CEFAQD	3.0	3.0	
CFCQUY	5.0	5.0	
CGSM SH	5.0	5.0	
CJCFYO	5.0	5.0	
CKPURY	2.0	2.0	
CLUVNO	2.3	2.0	
CMCOGS	3.0	3.0	
CPSGNT	3.3	3.0	
CQHATB	5.0	5.0	
CSDUO	5.0	5.0	
CSYVAP	1.0	1.0	
CVFYZS	3.0	2.7	
DAJXUS	3.7	3.7	
DDCTB	1.7	1.3	
DFJHXJ	5.0	5.0	
DGLZJD	3.0	2.7	
DGQPFM	3.7	3.7	
DKMWFU	5.0	5.0	
DKUEWW	2.7	2.3	
DLGUFK	2.3	2.0	
DLNVTH	2.7	2.3	
DLWMJX	5.0	5.0	
DMKULZ	3.7	3.7	
DZYXYW	2.0	1.7	
EBULVZ	3.7	3.7	
EEULEB	4.0	4.0	
EFGEFO	1.3	1.0	

EIUIQL	2.7	2.7	
ENNZEQ	5.0	5.0	
EOAXKO	2.7	2.3	
EPLENR	3.3	3.0	
EUOYPK	3.3	3.3	
EXBQPV	1.3	1.0	
EYPUYD	4.0	4.0	
EZZSTL	4.0	4.0	
FEHPAU	4.0	4.0	
FERQYC	3.0	3.0	
FGKWOR	2.0	1.7	
FGWGYQ	5.0	5.0	
FKTAMA	1.3	1.0	
FKTSFS	5.0	5.0	X
FLJTZC	5.0	5.0	
FPPTXS	5.0	5.0	
FPZKKG	5.0	5.0	
FQJWCZ	5.0	5.0	
FWJTEI	2.7	2.7	
FWTOGW	5.0	5.0	
FXUWOR	5.0	5.0	
FXVXJT	5.0	5.0	
FZOFQE	5.0	5.0	
GAFNAB	4.0	4.0	
GAJHUP	1.3	1.0	
GBESYX	3.7	3.7	
GBOZJR	5.0	5.0	
GDPJBB	4.0	3.7	
GDSHMO	4.0	4.0	
GFCGGB	3.0	3.0	
GFKNRC	3.7	3.3	
GHGWYY	5.0	5.0	
GIMAAO	3.0	2.7	
GLBBOT	5.0	5.0	X
GMLEGW	5.0	5.0	X
GPQRGB	3.7	3.3	
GSJCNF	5.0	5.0	
GTURIO	5.0	5.0	
GTWNSO	5.0	5.0	
GVLUBM	3.3	3.3	
GZIBMF	5.0	5.0	
HEEVIG	4.0	4.0	
HGCKWM	3.3	3.3	
HHIDIK	3.0	2.7	
HKHEHZ	2.3	2.0	
HOCKKY	4.0	4.0	
HPBYUN	2.3	2.0	
HRIPHU	3.7	3.3	
HRTMJR	2.0	2.0	
HSYSKS	4.0	4.0	
HTDXIS	5.0	5.0	
HUZPLT	5.0	5.0	
HXJOMP	3.0	3.0	
HXPUGM	4.0	4.0	
HYEJIL	5.0	5.0	
HZGWIZ	3.7	3.3	
IBUJCA	4.0	3.7	
IDXVNC	4.0	4.0	

IESLOF	5.0	5.0	
IFIQAR	5.0	5.0	
IIIGCZ	3.7	3.7	
IOUPLF	3.7	3.7	
ITJBQC	2.7	2.3	
IUBFDJ	3.0	2.7	
IUZYNW	5.0	5.0	
JBVCEW	2.0	2.0	
JDUDXN	3.7	3.3	
JEEPPU	5.0	5.0	
JEFHLX	2.0	1.7	
JFBIDA	2.7	2.7	
JFQNYL	3.0	3.0	
JGKQOJ	3.3	3.0	
JHGNOG	3.7	3.7	
JISMDF	3.0	2.7	
JJCGDI	5.0	5.0	
JKAWAG	5.0	5.0	
JLZOAJ	4.0	4.0	
JMDYZL	5.0	5.0	
JNHQYQ	4.0	4.0	
JNRKAM	5.0	5.0	
JNUQMV	3.3	3.3	
JPHIPY	2.7	2.3	
JPLPNS	3.7	3.3	
JPOQSD	1.7	1.3	
JUOZAM	2.3	2.0	
JVKGMP	3.3	3.3	
JWEDFC	5.0	5.0	
KAZUDI	2.3	2.0	
KFKVTO	4.0	3.7	
KIHLHP	3.7	3.7	
KIPBKU	5.0	5.0	
KJAGFU	2.3	2.0	
KLTPPG	3.7	3.3	
KLYALB	4.0	4.0	
KQJQTI	5.0	5.0	
KUOSCD	2.0	1.7	
KXFFMH	2.0	1.7	
KYKRRA	3.7	3.3	
KZVPKR	5.0	5.0	
LARYDI	5.0	5.0	
LDISWZ	5.0	5.0	
LELPIG	3.0	2.7	
LGIUCL	4.0	4.0	
LHEYIA	5.0	5.0	
LIGAZA	1.7	1.3	
LNRUHV	3.3	3.0	
LOJOFK	5.0	5.0	
LORSZK	4.0	4.0	
LPNBZW	2.3	2.3	
LRFZKE	1.3	1.0	
LSOYTD	3.3	3.3	
LXBZPU	1.0	1.0	
LZQADA	3.7	3.7	
LZWOWE	5.0	5.0	
MAHHFP	3.7	3.7	
MDJSCO	3.7	3.7	

MFLKSD	3.3	3.3	
MGAQKG	4.0	4.0	
MIBDZA	1.3	1.0	
MNAEPC	3.0	2.7	
MPWSTZ	3.3	3.3	
MRLCMV	2.7	2.3	
MRZCHE	3.3	3.0	
MTBVQI	2.7	2.3	
MTWDIZ	5.0	5.0	
MUXILV	5.0	5.0	
MXVGCM	3.7	3.3	
MYGWUT	5.0	5.0	
NBUKNT	3.3	3.3	
NFPKAT	4.0	4.0	
NFVFCI	2.7	2.3	
NGCQHR	3.3	3.0	
NLNMHJ	5.0	5.0	
NLTPUT	5.0	5.0	
NLWIQB	5.0	5.0	
NMMQVZ	5.0	5.0	
NRYNZA	5.0	5.0	
NSLDFR	3.3	3.0	
NTNPJO	4.0	4.0	
NWNASQ	3.7	3.7	
NWUNLZ	5.0	5.0	X
NXFQKE	5.0	5.0	
NYQTYZ	3.3	3.0	
NZIPNO	2.7	2.3	
OACQCI	5.0	5.0	
OADZEY	5.0	5.0	X
OBOPVT	5.0	5.0	X
OBSIAE	3.7	3.3	
ODMXTS	4.0	4.0	
OIKHTO	4.0	3.7	
OJLXTI	2.3	2.3	
OKIMFP	2.7	2.3	
OKOIKD	5.0	5.0	
OSURDR	2.7	2.7	
OWMCBD	4.0	3.7	
PAUBZM	5.0	5.0	
PCWLQJ	3.3	3.0	
PDJNUX	2.7	2.7	
PHUFHS	5.0	5.0	
PHUSYW	3.7	3.3	
PIUDIE	5.0	5.0	X
PPJWNX	4.0	4.0	
PQBGLU	1.7	1.7	
PXPECP	5.0	5.0	
PXQTTY	5.0	5.0	
QCLGFX	2.0	1.7	
QGCEQW	5.0	5.0	
QNHJMA	5.0	5.0	
QNRSHD	2.3	2.0	
QNYJSJ	3.7	3.7	
QQZSVR	5.0	5.0	
QRASCX	5.0	5.0	
QSZIKC	2.3	2.0	
QTSVNB	2.0	1.7	

QUBIOX	3.0	2.7	
QUHPDT	1.7	1.7	
QVBANM	5.0	5.0	
QVOLQV	2.3	2.0	
QWRMHW	5.0	5.0	
QYKGWT	1.7	1.3	
QZMQSJ	5.0	5.0	
RADWKP	1.0	1.0	
RCXZTN	4.0	4.0	
RDXQKF	4.0	4.0	
RENOII	3.0	2.7	
RICOGP	5.0	5.0	
RITMVX	5.0	5.0	
RLAEVO	5.0	5.0	
RXSDTO	2.0	1.7	
RZDOJR	2.3	2.3	
RZTOBM	5.0	5.0	
SAFUJH	5.0	5.0	
SFLCXJ	5.0	5.0	
SFTVLC	5.0	5.0	
SGEXCT	2.0	1.7	
SJBEQF	4.0	4.0	
SKWHVJ	2.3	2.0	
SNTOUG	3.7	3.7	
SNWWEI	3.0	2.7	
SOVBZZ	5.0	5.0	
SPHZOD	3.3	3.3	
SRTTHF	3.0	3.0	
SSCGQU	3.7	3.7	
SSMCBG	3.3	3.3	
STUTKR	5.0	5.0	
SUEZZG	1.7	1.3	
SYWBWT	3.0	3.0	
TCBAUP	2.0	1.7	
TCLKEQ	5.0	5.0	
TDIFIT	5.0	5.0	
TDQUIJ	4.0	4.0	
TEIZCR	5.0	5.0	
TFCRQC	3.0	3.0	
TGGNCM	3.0	2.7	
TNAFHG	4.0	4.0	
TNTPZO	3.3	3.3	
TOVFQP	5.0	5.0	X
TPFGKK	2.7	2.7	
TQCKTJ	4.0	3.7	
TSRCSD	5.0	5.0	
TSWLOB	4.0	3.7	
TXCYHO	1.7	1.3	
TXDSAM	3.3	3.3	
UEUSHN	4.0	3.7	
UJAEIX	5.0	5.0	
UJJPMH	3.0	3.0	
UJKZQG	3.3	3.3	
UJRDDG	5.0	5.0	X
UKBAID	1.0	1.0	
UKOGIH	4.0	4.0	
ULTSDE	1.3	1.3	
UTMKZS	3.0	3.0	

UVNEBL	3.3	3.0	
UXDMXQ	5.0	5.0	
UYMRYU	3.7	3.7	
VBGVXE	2.0	1.7	
VDIEDP	4.0	4.0	
VDZOEI	4.0	4.0	
VHNGUH	5.0	5.0	
VMLJHN	3.7	3.3	
VNYSZY	3.3	3.0	
VQPMQC	5.0	5.0	
VRVEXN	5.0	5.0	
VSEJPR	3.7	3.7	
VUOWYL	5.0	5.0	
VVAQUJ	5.0	5.0	
VWANIS	5.0	5.0	
VXDLQR	4.0	4.0	
VXMSXG	3.3	3.3	
WAGAMV	3.3	3.0	
WAHPTX	5.0	5.0	
WGPELQ	5.0	5.0	
WHBGON	4.0	4.0	
WMFKYX	5.0	5.0	
WSCCOD	5.0	5.0	
WZXGFK	1.3	1.0	
XAFOGZ	3.7	3.7	
XBLZPU	2.3	2.0	
XCOWYG	1.0	1.0	
XCQVJS	2.7	2.7	
XDSWEH	5.0	5.0	X
XESOOE	3.7	3.7	
XIXCIV	2.3	2.0	
XKKGHD	3.7	3.3	
XLBHYM	2.7	2.3	
XLKWDR	1.3	1.0	
XRCTFD	3.7	3.3	
XRVKPG	3.0	2.7	
XTRVZW	2.7	2.7	
XUENRJ	3.7	3.7	
XWEGIG	1.0	1.0	
XXPRKB	3.3	3.0	
YGMFFU	2.7	2.7	
YHFSFG	1.7	1.3	
YJGZLN	2.7	2.3	
YSYVDB	1.3	1.3	
YTBIFL	3.7	3.7	
YXPMFS	1.3	1.3	
YYGFEA	2.7	2.3	
ZAAWAP	5.0	5.0	
ZAFPMO	2.0	1.7	
ZBXRFD	2.3	2.0	
ZDCUIM	5.0	5.0	
ZDQRJJ	1.7	1.3	
ZELBMD	2.7	2.3	
ZJQHYS	5.0	5.0	
ZKCNKO	3.7	3.7	
ZMRKYP	5.0	5.0	
ZNZMJQ	3.0	2.7	
ZRJPNC	3.3	3.0	

ZYIGUV	3.3	3.3	
ZYJDTL	5.0	5.0	
ZZZZZZZ	5.0	5.0	X