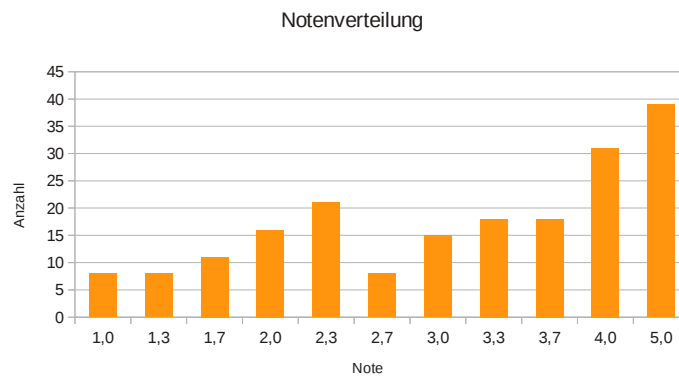


Ergebnisse der Hauptklausur Algorithmen II Wintersemester 2012/13

Die Klausureinsicht findet am Dienstag, den 19. März von 15:00 bis 17:00 Uhr und am Donnerstag, den 4. April von 15:00 bis 17:00 jeweils in Raum 301 im Infobau 50.34 statt.

Um die Wartezeiten möglichst kurz zu halten, bitten wir Sie, sich an die folgende zeitliche Einteilung nach Hörsalen zu halten:

15:00 - 15:30 Audimax
15:30 - 16:00 Neue Chemie
16:00 - 16:30 HsaF
16:30 - 17:00 Tulla



Durchfallquote: 20,21%
Notendurchschnitt: 3,26
nur bestandene: 2,25

Nötige Punkte	Note
47	1.0
44	1.3
41	1.7
38	2.0
35	2.3
32	2.7
29	3.0
26	3.3
23	3.7
20	4.0
0	5.0

5.0 = nicht bestanden

Klausur ID	Punkte	Note
0043	41,5	1.7
0046	19,0	5.0
007	26,0	3.3
0090	6,5	5.0
0320	35,0	2.3
0353	29,5	3.0
0377	19,5	5.0
0420	28,0	3.3
0443	43,0	1.7
0533	38,0	2.0
0566	28,5	3.3
0569	35,5	2.3
0586	32,5	2.7
0626	28,5	3.3
0690	55,0	1.0
0703	21,0	4.0
0731	35,5	2.3
0774	52,0	1.0
1052	10,0	5.0
1100	40,0	2.0
1183	36,5	2.3
1239	46,0	1.3
1269	28,0	3.3
1337	36,5	2.3
1338	29,5	3.0
1357	44,5	1.3
1396	29,0	3.0
1427	17,5	5.0
1483	22,5	4.0
1501	20,0	4.0
1521	17,0	5.0
1594	26,0	3.3
1641	46,5	1.3
1698	33,5	2.7
1728	21,5	4.0
1797	35,0	2.3
1854	15,5	5.0
1861	25,0	3.7
1866	15,0	5.0
1870	44,5	1.3
1908	21,0	4.0
1914	24,0	3.7
1935	17,5	5.0
1941	29,0	3.0
2035	23,5	3.7
2060	0,0	5.0

2078	34,5	2.7
2079	41,0	1.7
2150	39,0	2.0
2268	18,5	5.0
2270	38,5	2.0
2315	37,0	2.3
2354	13,0	5.0
241	16,0	5.0
2492	17,0	5.0
2547	20,0	4.0
2593	20,0	4.0
2602	12,5	5.0
2695	21,0	4.0
2870	18,5	5.0
2935	26,5	3.3
2981	24,5	3.7
3045	22,0	4.0
3111	22,5	4.0
316	14,5	5.0
3225	22,0	4.0
3327	30,0	3.0
3333	32,0	2.7
3351	38,0	2.0
3408	44,5	1.3
3426	40,5	2.0
3432	34,5	2.7
3442	21,5	4.0
3549	21,5	4.0
3614	37,0	2.3
3628	31,5	3.0
3649	36,0	2.3
3663	47,5	1.0
3711	40,5	2.0
3719	36,0	2.3
3754	7,0	5.0
3823	45,5	1.3
3869	21,5	4.0
3872	23,5	3.7
3908	48,5	1.0
3941	15,5	5.0
3979	37,0	2.3
4013	22,0	4.0
4043	19,5	5.0
4070	20,0	4.0
4132	35,5	2.3
4161	31,5	3.0
4193	0,0	5.0

4338	18,5	5.0
4371	39,5	2.0
4405	23,0	3.7
44812	21,0	4.0
462	bitte melden	
4627	35,0	2.3
4640	29,0	3.0
4681	29,0	3.0
4718	24,0	3.7
4734	19,5	5.0
4843	36,5	2.3
4855	24,5	3.7
4881	41,0	1.7
4933	23,5	3.7
4971	18,0	5.0
5052	11,0	5.0
5230	26,5	3.3
5246	36,5	2.3
5247	50,0	1.0
5259	30,0	3.0
5320	23,5	3.7
5350	23,0	3.7
5377	21,5	4.0
5410	45,5	1.3
5471	22,0	4.0
5496	11,5	5.0
5514	16,0	5.0
5527	41,0	1.7
5723	17,5	5.0
5765	35,0	2.3
5832	22,0	4.0
5842	47,5	1.0
5891	25,5	3.7
5927	40,0	2.0
5941	32,0	2.7
5963	37,5	2.3
5979	19,0	5.0
6044	19,5	5.0
6110	25,0	3.7
6207	2,5	5.0
6302	45,0	1.3
6309	21,5	4.0
6357	27,0	3.3
6389	16,5	5.0
6442	35,5	2.3
6467	17,0	5.0
6502	21,5	4.0

6528	27,0	3.3
6594	14,0	5.0
6631	33,5	2.7
6638	27,0	3.3
6659	0,0	5.0
6714	23,5	3.7
6812	43,0	1.7
6905	17,5	5.0
6936	27,5	3.3
7067	22,0	4.0
7072	12,5	5.0
7102	23,5	3.7
7104	20,0	4.0
7194	40,0	2.0
7196	22,5	4.0
7243	43,5	1.7
7286	20,5	4.0
7303	35,0	2.3
7363	30,5	3.0
7449	51,5	1.0
7459	27,5	3.3
7483	29,5	3.0
7574	39,5	2.0
7633	30,0	3.0
7684	25,0	3.7
7742	21,0	4.0
7774	55,0	1.0
7855	18,5	5.0
7928	28,5	3.3
7986	29,5	3.0
8036	24,0	3.7
8082	41,5	1.7
8247	22,0	4.0
8316	0,0	5.0
8352	21,0	4.0
8416	33,5	2.7
8446	27,5	3.3
8514	25,0	3.7
8531	16,5	5.0
8674	35,0	2.3
8684	39,5	2.0
8699	36,0	2.3
8745	7,0	5.0
8820	21,0	4.0
8848	43,5	1.7
8998	38,5	2.0
9032	27,5	3.3

9168	39,0	2.0
9189	20,5	4.0
9232	40,5	2.0
9333	13,0	5.0
9394	26,0	3.3
9403	28,0	3.3
9464	43,5	1.7
9535	29,5	3.0
9585	38,0	2.0
9801	41,0	1.7